

[View this email in your browser](#)



OPTAIN

Optimal Strategies to Retain
Water and Nutrients

Welcome to the 7th OPTAIN Newsletter

A periodical summary of news revolving around the OPTAIN project.
To find out more about what you can expect next, [check our website](#).



Off the shelves: A new report on modelling
the effectiveness of NSWORMs is published!

2024 International SWAT Conference
STRASBOURG - FRANCE

Group photo of the 2024 International SWAT Conference in Strasbourg (Credits: Mikotaj Piniewski)

modelling tool in the OPTAIN project to simulate the effectiveness of Natural/Small Water Retention Measures (NSWRMs) in 14 small agricultural catchments in Europe.

In March 2024, a comprehensive report "[Assessment of NSWRM effectiveness under current and future climate at the catchment scale](#)" was published by OPTAIN researchers, providing a first of its kind model-based assessment of NSWRMs in Europe and numerous innovations in the modelling workflow.

The report was presented during the International SWAT Conference ([link](#)).

🕒 7 MIN READ

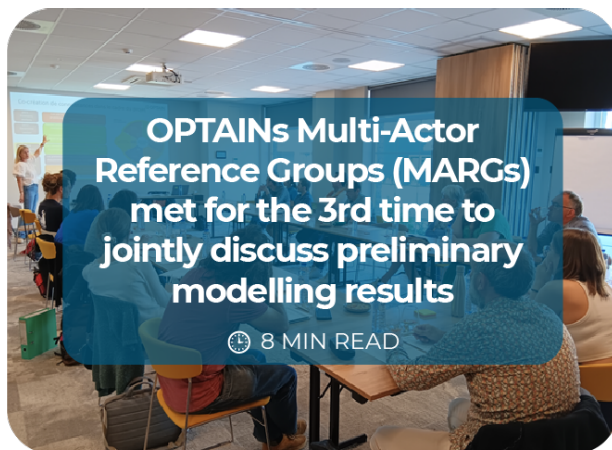
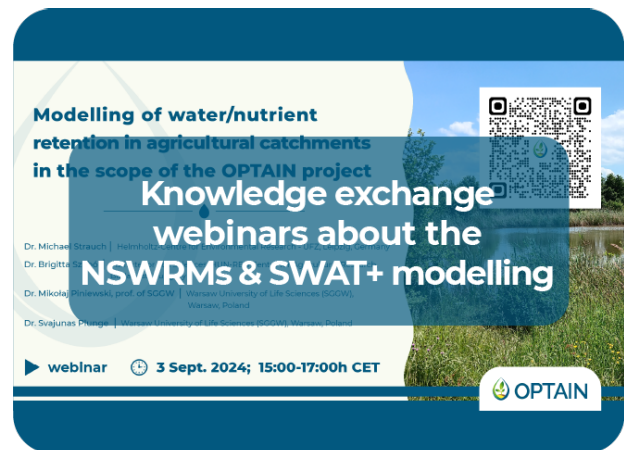


Photo of the 3rd MARG workshop held in Han sur Lesse, Belgium (Credits: Ivana Korn Varga)

OPTAIN involves various stakeholders on multiple levels, supporting sustainable water management and nutrient retention practices. Enhanced cooperation and knowledge exchange among stakeholders aim to improve future implementation of NSWRMs ([link](#)).



Invitation to the 2nd OPTAIN webinar (Credits: Lucia Labajova)

If you are interested to learn more about Natural/Small Water Retention Measures (NSWRMs) and the SWAT+ modelling work done throughout the OPTAIN project, check the recording of the webinars by clicking the link and scrolling down!



**Meet Our Case Study -
Felső-Válicka
(Hungary)**

🕒 3 MIN READ

Felső-Válicka stream flowing into the Zala River (Credits: Brigitta Szabó)

The water quality of the Felső-Válicka stream and the Zala River affects the environmental status of Central Europe's largest lake (Balaton), so it is crucial to prevent any pollution from human activities. A news article outlines some of the ways in which OPTAIN is helping to address the issues of the Felső-Válicka case study ([link](#)).



**Meet Our Case Study -
Schwarzer Schöps
(Germany)**

🕒 12 MIN READ

Photo of a grassed waterway (Credits: Felix Witing)

In the Quitzdorfer Talsperre, Saxony's reservoir blue-green algae blooms and declining water levels impaired the dam's function for local recreation, fishing and flexible control of outflows. Together with local stakeholders we selected promising Natural/Small Water and Nutrient Retention Measures ([link](#)).



**First Case Study
video available -
Kråkstad Catchment
(Norway)**

🕒 3 MIN WATCH

Norway Hobøl - Kråkstad Catchment (Credits: Screenshot from the video)

Collaboration between researchers and management authorities offers several benefits. Early involvement of management in research projects is crucial for achieving better results and ensuring that the knowledge gained can be effectively applied in future work. Click the link and scroll down to view the video.



**The Global Database
on Sustainable Land
Management (WOCAT)**

Constructed wetland within Kråkstad Catchment (Credits: Anne-Grete Buseth Blankenberg)

For more information about the NSWRM as part of the OPTAIN project, visit the WOCAT database by clicking the link!



Our mailing address is:

Want to change how you receive these emails?

You can [update your preferences](#) or [unsubscribe](#)

